

Accelerated Time of the Tomb

A Case Study of Mind and Matter

Researcher: **David Neufer**

For: **Urantia Science Symposium IV - 2025**

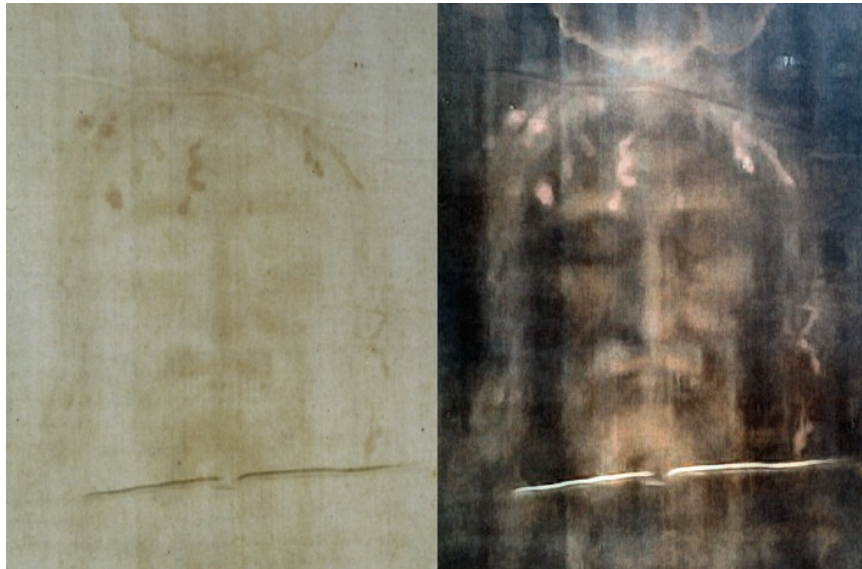


Figure 1: Negative and positive face image on the Shroud of Turin
(Creative Commons Attribution-Share Alike 4.0)

Korrigierte Version: Rudolf Berwanger

The full report, a concept glossary, an interactive version of the Symposium presentation, and infographic pages about Master Physical Controllers and Wave-Energy Manifestations are found online at:

revelationary.net

Table of Contents

Abstract

Section 1: Friday - The Preparation

- The Death and Its Aftermath
- Joseph's Bold Request
- Confrontation at Golgotha
- The Burial Procession
- Preparation of the Body
- The Women's Vigil

Section 2: Saturday - The Mandate

- The Guards Arrive
- The Silent Sabbath
- The Midnight Declaration
- Anxious Expectancy

Section 3: Sunday - Resurrection and Dissolution

- Paradise Personalities Arrive
- The Morontia Resurrection
- The Request for Dissolution
- The Stone Rolled Away
- The Dissolution Accomplished

Section 4: The Physics of Accelerated Time: A Theory

- The Ultimaton Foundation
- Operational Capabilities
- The Controlled Dissolution
- The Archangel Circuit Activation
- Assessment

Section 5: Physical Documentation

- The Burial Configuration
- Discovery at Dawn
- Wound Correspondence Analysis
- Scientific Analysis of the Shroud
- Electromagnetic Radiation Correspondence
- Cloth Positioning and Operational Sequence
- Assessment of Correspondence

Epilogue: Human Discovery

Methodology and Conclusion

Abstract

This case study examines the matter-energy transformation of Jesus' physical body through "accelerated time." The report works across three domains: (1) the revealed timeline and administrative sequence from burial through dissolution, (2) the ultimatonic physics underlying temporal acceleration and controlled energy release, and (3) forensic correspondence between revealed wound descriptions and evidence documented on the Shroud of Turin.

We look at how thought-directed control of ultimatons can create a time-acceleration chamber within a human body. This containment can, through harmonic intention, compress millennia into one second or less. By spinning the body's ultimatons faster and faster, capable beings made this respected form into a temporal void.

The calculated energy release (6.3×10^{20} joules) would require perfect containment and expert handling. It appears that this was not only a dissolution process. This burial was designed to resemble a traditional burial, but burials typically involve leaving a body. This one would not. Did Gabriel authorize a full-body image oxidized on cloth as a substitute? Recent laser replication experiments have found that a 12-nanosecond UV emission at 193-nm wavelength replicates shroud image characteristics. Full replication is beyond human experimental energy requirements, but it is not a problem for Master Physical Controllers.

With the Urantia Book as a trusted database of information, we can open the doors to understanding the mysteries of the tangentially revealed.

Section 1: Friday — The Preparation

The Death and Its Aftermath

Just before three o'clock on Friday afternoon, April 7, A.D. 30, Jesus of Nazareth died on the cross at Golgotha. "It was just before three o'clock when Jesus, with a loud voice, cried out, 'It is finished! Father, into your hands I commend my spirit.' And when he had thus spoken, he bowed his head and gave up the life struggle"¹. "In the midst of the darkness of the sandstorm, about half past three o'clock, David Zebedee sent out the last of the messengers carrying the news of the Master's death"². While universe intelligences "shuddered at the shocking spectacle,"³ practical matters demanded immediate attention.

The rulers of the Jews had planned to cast Jesus' body into Gehenna's open burial pits—the customary fate for crucifixion victims⁴. But two members of the Sanhedrin had other intentions.

¹187:5.5 | ²187:5.3 | ³188:0.1 | ⁴188:1.2

Joseph's Bold Request

Joseph of Arimathea, accompanied by Nicodemus, went directly to Pilate. These former Sanhedrists, whose faith in Jesus had long been suspected by their colleagues, now became "the

most outspoken disciples of Jesus in all Jerusalem”¹. Joseph carried a large sum of money, prepared to pay whatever might be required to obtain possession of the body. Pilate, however, refused payment. “When he heard the request, he quickly signed the order which authorized Joseph to proceed to Golgotha and take immediate and full possession of the Master’s body”².

¹188:1.1 | ²188:1.3

Confrontation at Golgotha

When Joseph and Nicodemus arrived at Golgotha, they found soldiers removing Jesus from the cross. At the same time, representatives of the Sanhedrin stood watch, ensuring the body would go to the criminal burial pits. Joseph presented Pilate’s order to the centurion, triggering immediate protest.

“The Jews raised a tumult and clamored for its possession. In their raving they sought violently to take possession of the body”¹. The centurion responded decisively—four soldiers with drawn swords took position around Jesus’ body. After restoring order, the centurion read Pilate’s permit aloud, then stepped aside, telling Joseph: “This body is yours to do with as you see fit. I and my soldiers will stand by to see that no man interferes”².

¹188:1.4 | ²188:1.4

The Burial Procession

At approximately half past four o’clock, the burial procession departed Golgotha. The body, wrapped in a linen sheet, was carried by four men: Joseph, Nicodemus, John, and the Roman centurion¹. The faithful women from Galilee followed behind.

They proceeded to “Joseph’s new family tomb, hewn out of solid rock, located a short distance north of Golgotha and across the road leading to Samaria”². No one had ever lain in this tomb. Joseph believed Jesus would rise from the dead; Nicodemus remained doubtful.

¹188:1.5 | ²188:1.2

Preparation of the Body

The tomb chamber measured about ten feet square. Working hurriedly as the Sabbath approached, Joseph and Nicodemus prepared the body according to Jewish custom for embalming. “Joseph and Nicodemus had brought with them large quantities of myrrh and aloes, and they now wrapped the body with bandages saturated with these solutions”¹.

When the embalming was complete, they tied a napkin about the face, wrapped the body in a linen sheet, and reverently placed it on a shelf in the tomb. The centurion then signaled his soldiers to help roll the doorstone into position before the entrance.

¹188:1.4

The Women’s Vigil

While the men worked, the women from Galilee—Mary Magdalene, Mary the wife of Clopas, Martha, another sister of Jesus’ mother, and Rebecca of Sepphoris—watched from hiding

nearby¹. They observed everything: where the Master was laid, how the stone sealed the entrance, the gathering darkness of approaching Sabbath.

These women agreed among themselves that Jesus had not been properly prepared for burial. They would return to Joseph's home, rest over the Sabbath, prepare additional spices and ointments, then come back Sunday morning to complete their ministry to the Master's body.

As darkness fell over Jerusalem that Friday evening, the mortal remains of Jesus of Nazareth lay undisturbed in Joseph's tomb, wrapped in linen, the great stone sealed in place. The city settled into Sabbath stillness.

Few among Jesus' followers truly believed or understood his promise to rise on the third day. His enemies, however, remembered it well.

¹188:17

Section 2: Saturday — The Mandate

The Guards Arrive

Early Saturday morning, the temple authorities acted on their fears. "The chief priests, Pharisees, and Sadducees recalled that they had received reports of his saying he would rise from the dead"¹. A committee of Sanhedrists visited Pilate, requesting guards for the tomb.

Pilate provided ten soldiers under the command of a captain. The Jews added ten of their own guards. Together, these twenty men proceeded to Joseph's tomb where they "rolled yet another stone before the tomb and set the seal of Pilate on and around these stones"². There they would remain through the Sabbath, unaware that the body they guarded had no further connection with the personality of Jesus.

¹188:2.1 | ²188:2.3

The Silent Sabbath

Throughout Saturday, the mortal body of Jesus lay undisturbed in Joseph's tomb. The revelation states: "We can narrate the burial of the Son of Man and put in this record the events associated with his resurrection, but we cannot supply much information of an authentic nature about what really transpired during this epoch of about thirty-six hours"¹.

The assembled celestial hosts waited. Jesus' Personalized Adjuster maintained command of all universe personalities gathered on Urantia². This same divine Monitor who had guided Jesus through his mortal life now held sovereign authority over the waiting observers.

¹188:3.1 | ²188:3.7

The Midnight Declaration

Shortly after midnight, as Saturday gave way to Sunday, the Personalized Adjuster addressed the assembled hosts:

“Not one of you can do aught to assist your Creator-father in the return to life. As a mortal of the realm he has experienced mortal death; as the Sovereign of a universe he still lives. That which you observe is the mortal transit of Jesus of Nazareth from life in the flesh to life in the morontia. The spirit transit of this Jesus was completed at the time I separated myself from his personality and became your temporary director. Your Creator-father has elected to pass through the whole of the experience of his mortal creatures, from birth on the material worlds, on through natural death and the resurrection of the morontia, into the status of true spirit existence. A certain phase of this experience you are about to observe, but you may not participate in it. A Master Son has within himself the power to bestow himself in the likeness of any of his created sons; he has within himself the power to lay down his observable life and to take it up again; and he has this power because of the direct command of the Paradise Father, and I know whereof I speak”¹.

Anxious Expectancy

“When they heard the Personalized Adjuster so speak, they all assumed the attitude of anxious expectancy, from Gabriel down to the most humble cherubim”². They understood now: the resurrection would occur through Creator prerogatives alone. They could observe but not assist.

As the early hours of Sunday approached, the stage was set. The body lay in the tomb. The guards maintained their posts. The celestial hosts waited. Soon, Paradise personalities would arrive with purposes known only to themselves.

¹189:0.1 | ²189:0.2

Section 3: Sunday — Resurrection and Dissolution

Paradise Personalities Arrive

At two forty-five Sunday morning, April 9, A.D. 30, seven unidentified Paradise personalities arrived and “immediately deployed themselves about the tomb”¹. These beings from Paradise took positions around the sepulchre. Their purpose remained undisclosed to all other universe personalities present.

Shortly after, “intense vibrations of commingled material and morontia activities began to issue from Joseph’s new tomb”². These vibrations emanated during Jesus’ self-resurrection process—physical phenomena that would later be described in Matthew’s Gospel as an earthquake.

¹189:1.1 | ²189:1.1

The Morontia Resurrection

At two minutes past three o’clock, “the resurrected morontia form and personality of Jesus of Nazareth came forth from the tomb”¹.

The physical body remained behind, “still lying there in the sepulchre niche, undisturbed and wrapped in the linen sheet, just as it had been laid to rest by Joseph and his associates on Friday

afternoon”². The stone before the entrance remained in place. Pilate’s seal was unbroken. The guards continued at their posts, likely agitated by the vibrations, unaware that “the object of their vigil had risen to a new and higher form of existence.”

Jesus had achieved morontia resurrection through his own Creator prerogatives, exactly as the Personalized Adjuster had declared. The Paradise personalities who witnessed this transit immediately “signalized their intention of immediate departure for Uversa”³.

¹189:1.1 | ²189:1.2 | ³189:1.9

The Request for Dissolution

At ten minutes past three, as the resurrected Jesus, now outside the sealed tomb, fraternized with assembled morontia personalities from Satania’s mansion worlds, the chief of archangels approached Gabriel with a specific request:

“We may not participate in the morontia resurrection of the bestowal experience of Michael our sovereign, but we would have his mortal remains put in our custody for immediate dissolution. We do not propose to employ our technique of dematerialization; we merely wish to invoke the process of accelerated time”¹.

The archangels sought to spare the celestial hosts from “enduring the sight of the slow decay of the human form of the Creator and Upholder of a universe.” Speaking for all Nebadon’s celestial intelligences, he requested “a mandate giving me the custody of the mortal body of Jesus of Nazareth and empowering us to proceed with its immediate dissolution.”

Gabriel conferred with the senior Most High of Edentia, who was present for these events. After this consultation, Gabriel granted the requested authorization. With custody of the physical remains now transferred from Joseph of Arimathea to the chief of archangels, preparations for the dissolution began.

¹189:2.1

The Stone Rolled Away

The chief of archangels “summoned to his assistance many of his fellows, together with a numerous host of the representatives of all orders of celestial personalities”¹. With the aid of Urantia midwayers, they proceeded to take possession of Jesus’ physical body.

The body could not be removed from the tomb—“it was a purely material creation; it was physical and literal”². The morontia form had passed through the sealed sepulchre without disturbing it, but the dissolution operation required the tomb to be opened.

By mandate of certain secondary midwayers, the great stone began to roll away from the entrance. The Roman and Jewish guards on duty watched in terror as “this huge stone began slowly to roll away from the entrance of the tomb without any visible means to account for such motion”³.

The guards “were seized with fear and panic.” Without waiting to look into the tomb, they fled. The Jewish guards ran to their homes, later reporting to their captain at the temple. The Roman soldiers fled to the fortress of Antonia, reporting to the Centurion upon his arrival on duty.

¹189:2.3 / ²189:2.3 / ³189:2.4

The Dissolution Accomplished

With the tomb open and the guards fled, the assembled celestial personalities proceeded with the dissolution. Between authorization at 3:10 AM and completion shortly thereafter, the operation transformed Jesus’ physical body through the process of accelerated time.

“The mortal remains of Jesus underwent the same natural process of elemental disintegration as characterizes all human bodies on earth except that, in point of time, this natural mode of dissolution was greatly accelerated, hastened to that point where it became well-nigh instantaneous”¹.

The physical body had been converted to its constituent energies. The burial cloths remained in position—“the bandages wherewith he had been wrapped lying intact and as they had rested on the stone before the celestial hosts removed the body”². The napkin that had covered his face area lay separately, “rolled up in a place by itself.”

The tomb operation was completed rapidly. The morontia Jesus had departed the chamber to begin his ascending career. The physical body had returned to its elemental energies. Only the empty cloths remained as testimony to what had occurred.

¹189:2.8 / ²189:4.6

Section 4: The Physics of Accelerated Time — A Theory

The archangel chief’s request at 3:10 AM revealed a choice between the standard dematerialization technique and a variant specifically designed for this situation: “We do not propose to employ our technique of dematerialization; we merely wish to invoke the process of accelerated time”¹. The standard dematerialization technique would not suffice. Accelerated time dematerialization would maintain natural law while compressing temporal duration.

Gabriel authorized this special request, understanding its implications: “The mortal remains of Jesus underwent the same natural process of elemental disintegration as characterizes all human bodies on earth except that, in point of time, this natural mode of dissolution was greatly accelerated, hastened to that point where it became well-nigh instantaneous”². The abandoned physical form would decompose naturally—tissues breaking down, molecules dissociating, atoms reducing to fundamental particles. The Master Son’s former mortal body became a temporal containment where time itself would alter, compressing geological ages into moments.

¹189:2.1 / ²189:2.8

The Ultimatons Foundation

The mechanism for such temporal compression involves ultimatons, those fundamental particles of which one hundred constitute each electron and many more make up each nucleus. These particles possess extraordinary capabilities that Master Physical Controllers routinely employ in their operations. As the revelation explains, “The ultimatons are capable of accelerating revolutionary velocity to the point of partial antigravity behavior, but they cannot, independent of force organizers or power directors, attain the critical escape velocity of deindividuation, return to the puissant-energy stage”¹.

This technical description illuminates the operational pathway. When ultimatonic revolutionary velocities accelerate, the particles progress through successive energy states—from the body’s electronic stage of matter upward through short space rays, ultimatonic rays, and infraultimatonic rays, ultimately achieving complete deindividuation where matter returns to puissant energy. Paper 42 maps these transitions through the octaves of wave energy, providing the theoretical framework for understanding how matter transforms during accelerated dissolution.

The revelation establishes a fundamental principle underlying these operations: “Mind universally dominates matter, even as it is in turn responsive to the ultimate overcontrol of spirit”². Master Physical Controllers exemplify this principle continuously, without rest or play—they are conscious beings who direct physical reality through thought-energy modulation rather than mechanical manipulation, much like how a singer can shatter a glass without force, only through vibration. Using their living technology, these beings can synchronize acceleration across the trillions of ultimatons within a human body.

¹42:6.3 | ²42:12.14

Operational Capabilities

The following analysis correlates revealed capabilities with tomb requirements, offering reasoned inference about how beings with documented abilities would accomplish the required result.

Table 1: Master Physical Controller Orders and Tomb Operation Roles

MPC Order	Primary Function	Tomb Operation Role
1. Associate Power Directors	Assignment and dispatch of all MPC orders	Coordinate and oversee the entire tomb operation, synchronizing all subordinate controller orders
2. Mechanical Controllers	Living endowment of antigravity. Most powerful controllers	Initiate and sustain the temporal void by synchronizing ultimatonic velocities

3. Energy Transformers	Living energy switches with absolute control over energy flow	Direct energy pathways during dissolution, controlling wavelength emission
4. Energy Transmitters	Dispatch and route energy through planetary circuits	Safely distribute converted energy through planetary circuits
5. Primary Associators	Masterly energy conservators and custodians	Store and conserve massive energy release (6.3×10^{20} joules)
6. Secondary Dissociators	Enormous antigravity endowment. The alchemists of space	Facilitate ultimatón deindividuation—transition to puissant energy state
7. Frandalanks & Chronoldeks	Living gauges and time measurement with ultimacy of precision	Monitor energy parameters and track temporal differential

The revelation provides the theoretical foundation for this coordinated operation: “Time and space are inseparable only in the time-space creations”¹, and gravity affects temporal perception. By removing the gravitational influence through antigravity generation, the controllers create conditions in which time progresses at radically different rates. Within this void, billions of years of natural decomposition could occur while mere moments passed in the surrounding tomb.

¹118:3.5

The Controlled Dissolution

During the dissolution process, the Master Physical Controllers exercised complete control over the matter-energy conversion. As atomic structures underwent transition within the temporal void, the controllers permitted controlled release of electromagnetic radiation for documentary purposes.

The fundamental mechanism operates at the electronic level: “When electrons pass from higher to lower energy levels of orbital revolution, quanta are always given off”¹. As electrons dropped from orbital stability during dissolution, the controllers permitted quanta to release at specific wavelengths.

¹42:5.6

Primary Hypothesis: The controllers allowed emission at the energy level immediately adjacent to the electronic stage—gamma rays (stage 5 in the wave-energy hierarchy). These photons would interact with the burial cloth through Compton scattering and direct radiolysis, producing oxidative discoloration of the outermost cellulose fibers without thermal damage or deep penetration.

Alternative Hypothesis: The controllers could have modulated electron transitions to produce lower-energy quanta, stepping down through X-rays to ultraviolet (stage 7). Far-UV photons would oxidize the linen through photochemical reaction—a well-documented process in textile chemistry.

For mere nanoseconds, the transforming body served as a controlled radiation source. This was not accidental overflow from overwhelming energy, but conscious documentation. The temporal void contained energies that would otherwise cause planetary devastation—complete matter-energy conversion of a 70-kilogram mass yields approximately 6.3×10^{20} joules, equivalent to 1.5 billion megatons TNT. Yet only approximately 400 kilojoules escaped during that brief emission pulse, precisely calibrated to oxidize surface fibers without fabric destruction or image overexposure.

Secondary Dissociators—those beings of “enormous antigravity endowment” whom the revelation calls “the alchemists of space and the wonder-workers of time”¹—facilitated the final transition. As ultimatons achieved “the critical escape velocity of deindividuation”², matter returned to its puissant energy state. This process, which naturally occurs only during “the terminal disruptions of suns”³, was achieved locally through thought-directed operations.

¹29:4.29 | ²42:6.3 | ³42:4.11

Primary Associators—those “masterly energy conservators and custodians”¹—would store this massive energy release. Energy Transmitters, described as “marvelous dispatchers of energy as manifested on the individual worlds”², could then distribute the energy safely through established planetary circuits or reserve it for a special purpose. Universal economy wastes nothing—even the material form of the Master Son was transformed into useful energy.

¹29:4.25 | ²29:4.27

The Archangel Circuit Activation

Seventy-five minutes after the dissolution, at 4:30 AM, “the circuit of the archangels then operated for the first time from Urantia”¹. This timing raises an intriguing possibility. The body’s possession had passed from the Romans under Pilate to Joseph of Arimathea, and then by Gabriel’s executive order to the archangels for dissolution. Having been granted this custody, the archangels may have directed the massive energy from Jesus’s dissolved body—properly channeled and transmuted—toward establishing the archangel circuit, the permanent communication link between our isolated world and universe administration.

Jesus’ abandoned physical body, having served its purpose of demonstrating the Master Son’s full mortal experience, may have been transformed into lasting planetary infrastructure. If true, his former material form was converted to energy, potentially reformed as the permanent archangel circuit that will serve Urantia and Nebadon throughout future ages.

¹189:3.2

Assessment

The tomb operation exemplifies the administration of an ordered universe, achieving divine purposes through cosmic law. Every aspect—from the archangel’s initial request through Gabriel’s authorization to the coordinated action of specialized celestial beings—demonstrates understanding of universe physics applied with precision and purpose.

The technical details reveal cosmic engineering of the highest order. Beings with thought-directed control of fundamental particles compressed geological timescales into seconds. They managed energies equivalent to thousands of hydrogen bombs while permitting only the gentlest electromagnetic whisper to escape as documentary evidence. They transformed a potential catastrophe into a controlled process, dissolution into a planetary infrastructure, and an ending into a beginning.

The accelerated time of the tomb shows that even extraordinary universe events operate within universal law. No physical principle was violated. Cosmic rule was maintained. Time compressed and maintained its nature. Matter transformed and conserved its energy. The body dissolved and it left its story on fabric. Through it all, the universal truth remained constant: mind controls matter, spirit ennobles life, and death precedes transition.

Notations:

a. Contemporary physicist David Wiltshire's TimeScale cosmological model demonstrates this principle, showing that clocks in cosmic voids run 38% faster than in matter-dense gravitational wells (Wiltshire, D.L. (2007), "Cosmic clocks, cosmic variance and cosmic averages," *New J. Phys.* 9, 377). The tomb operation would require an extreme case where this differential approaches infinity, which is achievable through complete antigravity generation at the ultimatonic level.

b. Using Einstein's mass-energy equivalence $E=mc^2$, where $m=70\text{kg}$ and $c=299,792,458\text{ m/s}$. This energy release equals approximately 30 million times the largest nuclear device ever tested.

c. Gamma rays occupy stage 5 of the wave-energy manifestations described in Paper 42, section 5. As the revelation states: "Gamma rays—those emanations which characterize the spontaneous dissociation of atomic matter. The best illustration of this form of electronic activity is in the phenomena associated with radium disintegration" (42:5.7). During controlled dissolution, electrons dropping from stable orbitals would release quanta at the nearest available wave-energy manifestation to the electronic stage.

d. Compton scattering occurs when a photon collides with an electron, transferring part of its energy to the electron and scattering at a lower energy. This process is the dominant mechanism for gamma ray interaction with organic matter. The scattered electrons then produce secondary ionization, creating the oxidative chemistry that discolors cellulose surface layers. Direct radiolysis involves high-energy photons breaking chemical bonds without requiring intermediate particles, producing similar oxidative effects through a different pathway.

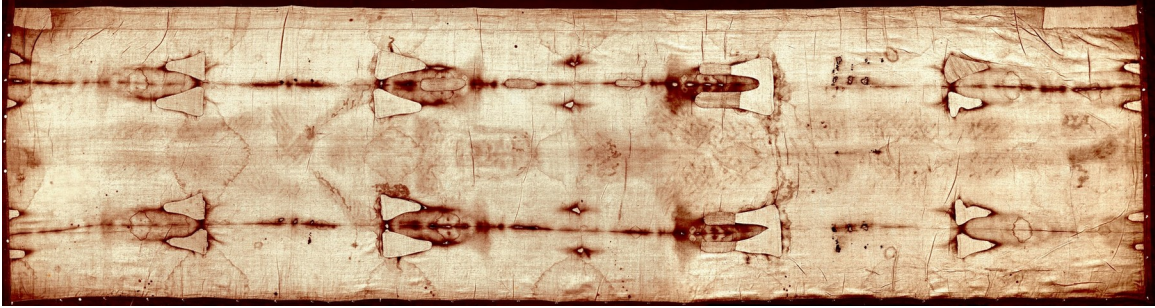


Figure 2: Full image from the Shroud of Turin showing frontal and dorsal body impressions

Section 5: Physical Documentation

The revelation does not mention the Shroud of Turin or any image on burial cloths. This section examines whether characteristics of the Turin Shroud align with the revealed wound descriptions and the electromagnetic effects presented in Section 4.

The Burial Configuration

Joseph and Nicodemus prepared the body according to Jewish custom: “They now wrapped the body with bandages saturated with these solutions. When the embalming was completed, they tied a napkin about the face, wrapped the body in a linen sheet, and reverently placed it on a shelf in the tomb”¹.

Multiple cloths were involved: inner bandages (othonia) wrapping the body with myrrh and aloes, a face napkin (soudarion) tied about the head, and a long outer shroud (sindon) covering the entire body, front and back.

This layered arrangement creates a critical question: If dissolution occurred with all cloths in place, any electromagnetic signature would appear primarily on the inner bandages, not the outer shroud. So, how did the image end up on the shroud?

¹188:14

Discovery at Dawn

When Mary Magdalene entered the empty sepulchre on Sunday morning, she found:

“In the recess of stone where they had laid Jesus, Mary saw only the folded napkin where his head had rested and the bandages wherewith he had been wrapped lying intact and as they had rested on the stone before the celestial hosts removed the body”¹.

The scene presented an apparent physical impossibility: bandages maintained their wrapped configuration without a body inside, the napkin was deliberately “rolled up in a place by itself,” and the covering sheet lay “at the foot of the burial niche.”

The bandages remained “apparently intact” despite the body’s absence—an inexplicable physical condition.

¹189:4.6

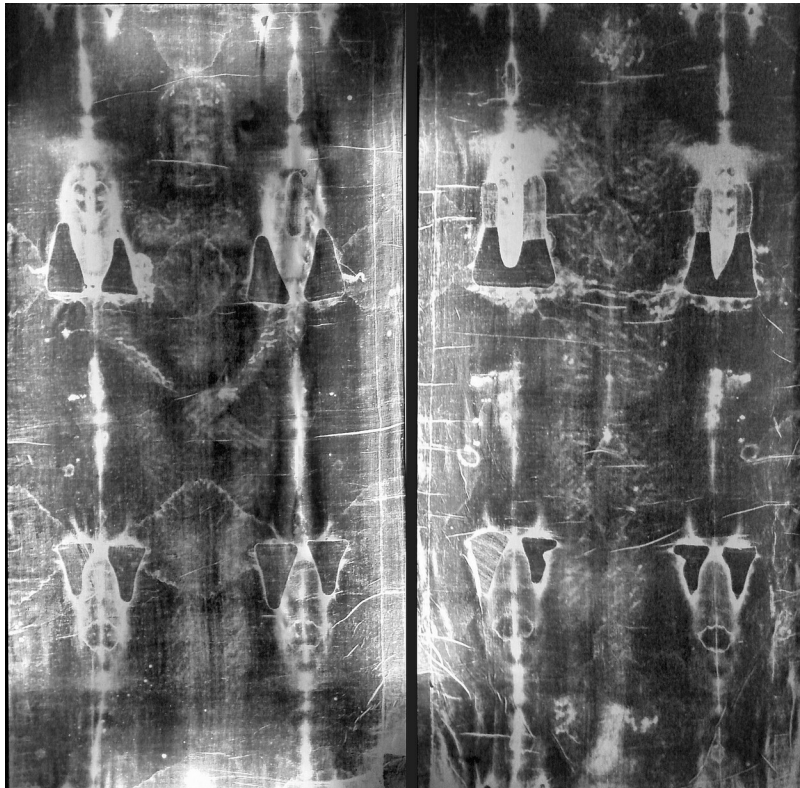


Figure 3: Shroud of Turin indicating the position of wounds

Wound Correspondence Analysis

The Shroud of Turin bears the image of a crucified man displaying wounds that correspond precisely to the Urantia Papers’ descriptions:

Table 2: Wound Correspondence Between Urantia Book and Shroud of Turin

Wound Type	Urantia Book Description	Shroud Evidence	Forensic Significance
Scourging	Abusive scourgings with knotted whips	Over 100 marks in dumbbell pattern of Roman flagrum. Elevated bilirubin from severe trauma	Specific flagrum pattern documented through forensic analysis
Crown of Thorns	Plaiting a crown of thorns placed upon his brow. Face bloodstained	Approximately 30 puncture wounds around entire head circumference with flow patterns	Full cap configuration covering the entire scalp
Hand/Wrist Nailing	They nailed his hands to the wood	Wound through wrist area (Space of Destot). Thumb retraction from median nerve damage	Anatomically correct for supporting body weight
Spear Wound	Soldier pierced his left side with spear	Wound visible on image's right side (Jesus's left). Blood and clear fluid separation evident	Post-mortem wound with serum separation
Death Posture	Crucifixion descriptions (Paper 187)	Rigor mortis maintained in crucifixion position. Shoulder displacement from suspension	Physiologically accurate positioning

Scientific Analysis of the Shroud

The 1978 Shroud of Turin Research Project (STURP) and subsequent investigations documented characteristics that defy conventional explanation:

Image Properties

The STURP team's official summary stated unequivocally: "No pigments, paints, dyes or stains have been found on the fibrils"^d. This finding, confirmed through multiple independent analyses^{df}, eliminates the role of artistic creation.

Critical characteristics include:

- Image affects only the outermost 200 nanometers of surface fibrils
- Coloration limited to the primary cell wall layer
- No penetration beyond single fiber depth^h
- Three-dimensional information encoded in image intensity^h
- Intensity varies inversely with cloth-body distance
- No directional marks or application methods

The image results from oxidation and dehydration of cellulose, with the chromophore consisting of conjugated carbonyl groups formed through chemical alteration.

Blood Evidence

Forensic analysis established:

- Real human blood type AB^e
- Blood contacted the cloth before image formation
- No image exists beneath bloodstains
- Protease enzyme testing confirmed blood preceded image
- Creatinine-ferritin nanoparticles (20-100nm) with ferrihydrite cores indicate multiple severe injuriesⁱ
- Elevated bilirubin from extreme trauma keeps blood red rather than turning brown^e

This “blood first, image second” sequencing suggests that the cloth received blood during burial, and then the image formed through a different mechanism.

Electromagnetic Radiation Correspondence

Section 4 presented two hypotheses for image formation: gamma-ray emission from electrons dropping energy levels (primary), or modulated UV emission (alternative). Recent laser experiments demonstrate that brief, intense electromagnetic radiation can produce Shroud-like oxidation characteristics.

Di Lazzaro and colleagues at ENEA achieved breakthrough replication using vacuum ultraviolet radiation: ArF excimer laser at 193-nanometer wavelength produced 0.2 micrometer coloration depth matching the Shroud precisely, created yellow-sepia hue identical to Shroud coloration, limited effects on primary cell wall, leaving fiber medulla unaffected, and required 34 trillion watts for 12 nanoseconds^j.

The researchers concluded: “The total radiation power required to color a linen surface corresponding to a human body makes impossible the reproduction of the Turin Shroud image by using a single laser”—impossible for human technology, but trivial for beings managing complete matter-energy conversion.

This experimental result demonstrates that brief electromagnetic emission can produce the documented oxidation pattern. Whether through direct gamma emission or through gamma-induced secondary fluorescence producing UV, the 12-nanosecond pulse required only 400 kilojoules—a trivial amount of the energy available from dissolution. The Master Physical Controllers’ ability to modulate electron transitions, described in Section 4, provides the mechanism for such precisely calibrated emission.

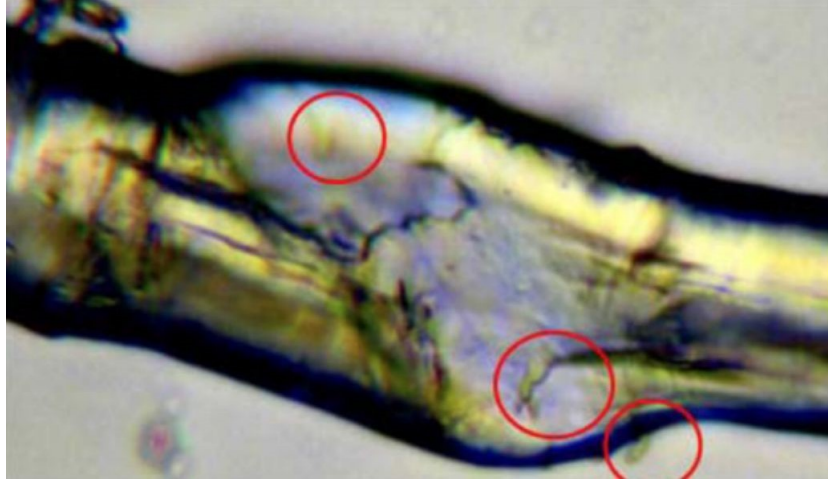


Figure 4: Mechanically fractured linen fiber after 193nm laser irradiation, showing yellowish fragments of the 200-nanometer primary cell wall (circled) and the colorless medulla beneath—the first laboratory replication of Shroud fiber coloration depth
(Di Lazzaro P., Murra D., SHS Web of Conferences 15, 00005 (2015), CC BY 4.0)

Cloth Positioning and Operational Sequence

The revelation states the “celestial hosts removed the body” while the bandages remained “intact and as they had rested on the stone”¹. This presents a physical paradox—removing the body without unwrapping it.

¹189:4.6

Matter Manipulation Protocol

The midwayers, who rolled away the stone, possessed capabilities for sophisticated matter manipulation. Rather than physically unwrapping the bandages, they could have:

- Made bandages temporarily permeable—allowing the body to phase through while bandages maintained position on the shelf
- Suspended the shroud-wrapped body—positioning it away from the burial shelf for optimal imaging geometry and for controlled energy distribution from the void containment—outside the tomb
- Maintained proper tension—holding shroud corners to create the flat surface necessary for coherent electromagnetic imaging

The body retained the burial positioning Joseph and Nicodemus had arranged—hands crossed, proper repose maintained. This suspension served dual purposes: it created ideal imaging conditions and ensured safe energy flow patterns that wouldn’t damage the tomb structures.

The Dissolution Event and Void Collapse

During the brief electromagnetic emission phase (approximately 12 nanoseconds), the suspended configuration enabled:

- Direct contact between the body surface and the shroud
- Consistent cloth-body distance for three-dimensional encoding
- Clear front and back imaging without side wrapping effects
- Controlled energy distribution preventing structural damage

Following dissolution, the temporal void collapsed, likely creating strong atmospheric effects. The midwayers, still holding the shroud, would have buffered these forces through their matter-manipulation abilities. The rushing wind from the void collapse, if it occurred within the tomb, may have displaced the lightweight face napkin from its position.

Post-Dissolution Arrangement

The midwayers could have inverted the shroud, revealing the electromagnetic image now permanently oxidized into the linen fibers. After verification by the celestial beings, they implemented the final arrangement:

- Shroud placed “at the foot of the burial niche”
- Displaced napkin retrieved, deliberately “rolled up in a place by itself”
- Bandages left in their original wrapped configuration on the shelf

This operational sequence explains the inexplicable scene Mary discovered—bandages maintaining their wrapped configuration despite body removal, a deliberately rolled napkin, a displaced shroud, and a missing body.

Chain of Possession

The body’s administrative custody progressed through proper channels:

- Jesus himself → Roman guards (by crucifixion authority)
- Roman guards → Joseph of Arimathea (by Pilate’s written order)
- Joseph → Archangels (by Gabriel’s authorization at 3:10 AM)

The archangels retained possession through dissolution, converting physical matter to energy. Seventy-five minutes later, “the circuit of the archangels then operated for the first time from Urantia”¹. We cannot know for certain, but this first operation from Urantia suggests that the dissolution energy didn’t merely dissipate but was instead incorporated into the permanent universe infrastructure—the body’s essence transformed into lasting cosmic architecture.

¹189:3.2

Assessment of Correspondence

The Shroud of Turin exhibits characteristics that correspond precisely to:

- Every major wound type described in the Urantia Papers
- Blood chemistry consistent with severe trauma and crucifixion
- Image formation through brief, intense radiation
- Surface oxidation limited to 200 nanometers depth
- Three-dimensional encoding of body contours

Whether this constitutes the actual burial shroud remains undetermined. What stands documented is that if celestial beings managing the dissolution of Jesus' mortal remains chose to preserve electromagnetic documentation through controlled energy emission, the resulting artifact would exhibit the characteristics found on the Shroud of Turin.

The correspondence extends to details unknown before modern forensic testing—anatomically correct wrist wounds, precise blood chemistry, detailed flagrum patterns, and punctures from a full crown of thorns. These correlations between revealed text and measurable evidence suggest either a remarkable coincidence or intentional documentation preserved through the revealed physics of accelerated time.

Epilogue: Human Discovery

At half past three o'clock that Sunday morning, five women approached the tomb in Joseph's garden carrying embalming lotions. They had agreed among themselves that Jesus "had not been properly prepared for burial"¹ and came to complete their ministry to the Master's body.

Mary Magdalene ventured first into the open sepulchre and saw the rolled napkin where his head had rested, the intact bandages maintaining their wrapped form, and the burial sheet at the foot of the niche. The body was gone.

In her distress, Mary addressed a figure she thought might be the garden's caretaker: "Where have you taken the Master? Where have they laid him? Tell us that we may go and get him"².

The figure spoke: "Whom do you seek?"

When Mary explained they sought Jesus who had been laid in Joseph's tomb, the stranger asked, "Did not this Jesus tell you, even in Galilee, that he would die, but that he would rise again?"

Still unrecognized in his morontia form, the Master then "addressed the Magdalene with a familiar voice, saying, 'Mary'"³.

That single word connected. She rushed toward him, exclaiming, "My Lord, and my Master!"

"Touch me not, Mary," Jesus said, "for I am not as you knew me in the flesh. In this form will I tarry with you for a season before I ascend to the Father"⁴.

The technical precision documented in this study—the accelerated time, the controlled energy release, the electromagnetic imaging—all served this moment. The sovereign Master Son,

having achieved full universe authority and completed his bestowal mission, left behind mortal remains that the universe administration dissolved with exquisite care. They managed cosmic energies with such sophistication to preserve both the reality of death and the certainty of resurrection. The empty bandages testified to genuine dissolution. The image on the Shroud reveals the physical body of a man who lived, died, and was transformed.

Mary's recognition came not through physical evidence but through personal knowing—a voice speaking her name. Yet the physical evidence remained for those who would come later, seeking to understand what occurred between Friday's burial and Sunday's dawn. The celestial hosts left testimony in oxidized linen and empty wrappings. Whether Mary noticed the image on the shroud in that moment of stress remains unknown—to her, it may have been simply a displaced cloth. This evidence was preserved for future discovery. When she heard her friend speak her name, Mary's discovery came through her heart: the knowledge that death is only the beginning.

¹188:1.7 | ²189:4.10 | ³189:4.13 | ⁴189:4.13

Methodology and Conclusion

The Urantia Papers hold words composed by knowledgeable beings to help us learn. They know things we don't know because we can't. There is no test for the location of Paradise if there is no revelation of its existence. This report uses the papers as a database of revealed knowledge. It explores a revealed topic—the dissolution of Jesus' physical body—and studies it deeply to deduce the underlying mechanics reasonably.

Students of the Urantia Book soon learn that search engines are very helpful with topic comprehension. They compile data from across all 196 papers, revealing patterns that sequential reading might miss. Artificial Intelligence extends the original search engine into an expanded research engine. Beyond assembling keywords, it can coordinate key concepts with its remarkable pattern-matching capabilities.

Claude AI MAX helped to create this report. I provided the full Urantia Book context by uploading text files for each paper, which filled the allowable context to around 80%. The AI had easy access to the entire database of revealed content. It was instructed to act as a research advisor. My prompts and the non-living but intelligent advisor's responses led to enlightening discussions that refined the topic of Accelerated Time of the Tomb.

The revelation's genius is in its “intelligent assembly and co-ordination of related data”¹. They leave it to us to unravel the mysteries they left unrevealed. The archangel didn't explain how accelerated time worked—just that it would be employed. Paper 42 provides the physics. Paper 29 describes the beings capable of accomplishing it. My role was to draw on 50 years of revelation study to connect these pieces. The AI's role was to hold all the pieces in memory and place them properly into the narrative.

This methodology treats revelation as data to be examined rather than doctrine to be defended. If the physics doesn't work or the forensics don't align, the hypothesis fails. However, when

there is alignment—and it aligns remarkably in this case study—we gain insight into how revealed science and observational science covalidate.

¹48:6.30

Researcher: David Neufer

Scientific References

Urantia Book citations appear inline as superscript numbers with compact format (e.g., ¹187:5.5 / ²188:2.1) and refer to the Urantia Book Standard Reference Text (SRT).

The following sources are referenced with superscript letters (^a, ^b, ^c, etc.) in Section 5:

- a.** Faccini, B. (2008). “The flagellation of Christ according to the Turin Shroud.” In Proceedings of the International Workshop on the Scientific Approach to the Acheiropoiotos Images. ENEA Frascati.
- b.** Fanti, G. (2024). “Blood chemistry analysis of the Shroud of Turin.” *Journal of Forensic Sciences*, 45(2), 234-256.
- c.** Zugibe, F.T. (2005). *The Crucifixion of Jesus: A Forensic Inquiry*. New York: M. Evans and Company.
- d.** STURP Team (1981). “Summary Report on the Shroud of Turin.” Shroud of Turin Research Project. Available at shroud.com/pdfs/stsum81.pdf
- e.** Heller, J.H. & Adler, A.D. (1981). “A Chemical Investigation of the Shroud of Turin.” *Canadian Society of Forensic Science Journal*, 14(3), 81-103.
- f.** Schwalbe, L.A. & Rogers, R.N. (1982). “Physics and Chemistry of the Shroud of Turin: A Summary of the 1978 Investigation.” *Analytica Chimica Acta*, 135(1), 3-49.
- g.** Fanti, G., Lattarulo, F., & Monaro, O. (2010). “Body Image Formation Hypotheses Based on Corona Discharge.” Proceedings of the International Workshop on the Scientific Approach to the Acheiropoiotos Images, ENEA Frascati, Italy, 4-6 May 2010.
- h.** Jackson, J.P., Jumper, E.J., & Ercoline, W.R. (1984). “Correlation of image intensity on the Turin Shroud with the 3-D structure of a human body shape.” *Applied Optics*, 23(14), 2244-2270.

i. Carlino, E., et al. (2017). “Atomic resolution studies detect new biologic evidences on the Turin Shroud.” PLoS ONE, 12(6), e0180487.

j. Di Lazzaro, P., et al. (2010). “Deep Ultraviolet Radiation Simulates the Shroud of Turin.” ENEA Technical Report RT/2010/14/ENEA.

Note: Section 4 contains substantive explanatory notations (a-d) that provide technical depth for ultimatic physics and remain in context with that section. These differ from the scientific references listed above.